

What we can offer

Project Experience:

Atkins has coordinated EIA's for a number of energy projects including the following wind farms: Binnion Hill / Lettergull, Co. Donegal; Curraheen, Co. Tipperary; Kill-Hill, Co. Tipperary; Kilbraney, Co. Wexford; Clonlard, Co. Wexford; and the Landscape and Landscape Character Assessment for Galway County incorporating a Strategic Assessment for wind farms.

Specific Services:

Atkins can provide the following services for renewable energy projects of any scale:

- Site feasibility and wind test mast planning applications
- Scoping studies to identify constraints
- Environmental Impact Assessment and Mitigation
- Creation of photomontage using RESOFT WIND FARM software

Clients include:

Gaelectric Developments Ltd,
Gaz de France ESS,
Kemar Ltd.,
npower renewables,
Southern Water,
The Northern Energy Initiative(TNEI),
WEOM Ltd,
Airtricity Developments (UK) Ltd,
TNEI Services,
First Windfarm Holdings Ltd,
Royal Insurance Company Ltd,
Royal Mail,
Wind Prospect Ltd.,
Health & Safety Executive,
West Coast Wind Farms,
Renewable Energy Systems Ltd.,
National Wind Power.

Key contacts

To access our environmental specialists, please contact key Atkins staff from our offices listed below:

Bernadette O'Connell - EIA Co-ordination
+353 1 890 9013
bernadette.oconnell@atkinsglobal.com

Paul O'Donoghue - Bird Studies
+353 21 4290300
paul.odonoghue@atkinsglobal.com

George Smith - Ecological Assessment
+353 1 8909000
George.f.smith@atkinsglobal.com

ATKINS

EIAs for
Renewable Energy Developments

Office locations

Ireland

Atkins employs over 18,000 staff located in our offices around the world. Our Irish offices are:

Dublin Office:

Atkins House, 150-155 Airside Business Park,
Swords,
Co. Dublin Telephone +353 1 890 9000

Cork Office:

Unit 2B, 2200, Cork Airport Business Park, Cork
Telephone +353 21 429 0300

Galway Office:

2nd Floor, Technology House, Parkmore
Technology Park, Galway Telephone +353 91 786
050

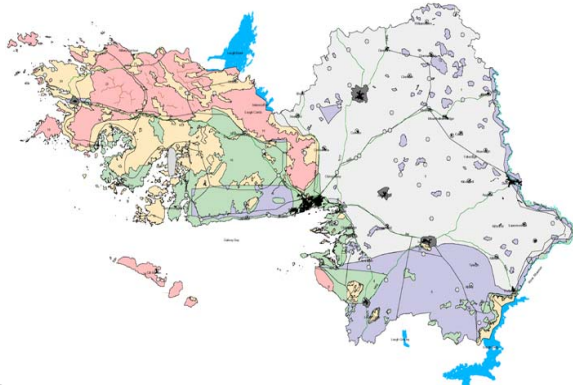
email: info.ie@atkinsglobal.com or visit our
website at www.atkinsireland.ie



Plan Design Enable

Project experience

Strategic Advice on Windfarm Location and Feasibility based on Landscape Character Assessment & Visual Impact



Project: Galway Landscape and Landscape Character Assessment

Atkins Environment Section was commissioned in 2001 to carry out a Landscape and Landscape Character Assessment of Galway County.

This project involved:

- Classification of landscape into areas suitable for development of Wind Energy i.e. a combination of low scenic value, outside safety exclusion zones and where the wind resource was at or above 6m/sec.
- Specific Guidelines for siting of Wind Energy projects with regards to the likely acceptability of the turbines in landscape character types;
- A study of the landscape character generally by, including specific natural and heritage assets worthy of preservation or conservation;
- Classification of areas for future woodland.

The guidelines have been included in the current Galway County Development Plan 2003 – 2009 and have contributed to the control and siting of development including Wind farms on a plan led basis.

Project experience

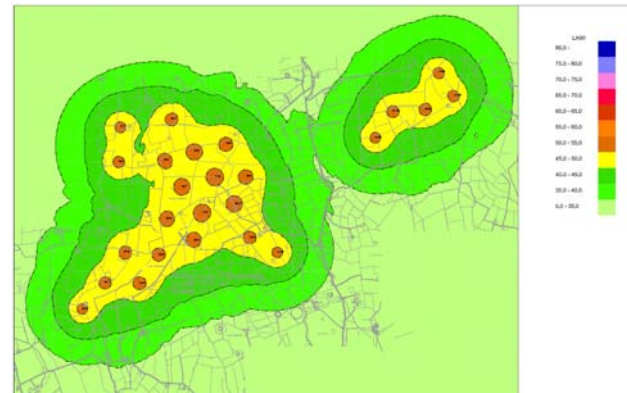
Environmental Impact Assessment

Project: Kill Hill Wind Farm

Kill Hill wind farm will be located to the north-east of Cashel town in County Tipperary, Ireland and comprises the installation and operation of 16-turbines with a height range between 118m and 121.5m to tip of blade and generating approximately 38MW to 47.5MW of electricity.

Atkins environmental consultants carried out the Environmental Impact Assessment for this scheme in 2006. The wind farm was granted Planning Permission in February 2008 for 16 of the 19 turbines in the original application.

Of local concern was the proximity of individual turbines to local properties and the resulting noise impact. Atkins noise assessment described that by varying the power configuration of one of the turbines that there would be no exceedances of noise limits.



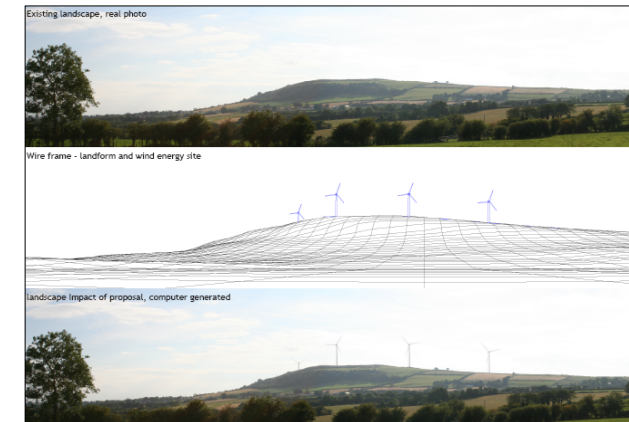
Above – Noise map of the turbines with scale of predicted noise levels during operational phase

Project experience

Environmental Impact Assessment

Project: Binnion Hill / Lettergull Wind Farm

Binnion Hill / Lettergull wind farm will be located north of Lifford, on the eastern side of County Donegal, Ireland and will comprise the installation and operation of 13 wind turbines to be developed in 2 phases. The first phase was granted planning permission in June 2006.



Above – Scheme photomontage

Atkins carried out the environmental surveys and reporting for this scheme in 2006. Of concern was the use of a potato field within the site as feeding grounds by sensitive bird species. Additionally the site was close to the Foyle River valley, which was the focus of principal views in the area for residential properties and there were concerns that visual impacts would result.

Changes were made to the micrositing of the turbines and to the agricultural practices of lands around the site. This mitigated both the visual impacts and the impact on the feeding grounds for sensitive birds.